



ISO 9001 FM584850

Test pressure (MSS SP-80)	
shell test	24
seat test	18
air test	6

100 psi = 7Kg (7bar)



Feature

1. Blow-out proof stem
2. Two piece design
3. Full port
4. out surface Nickel plated

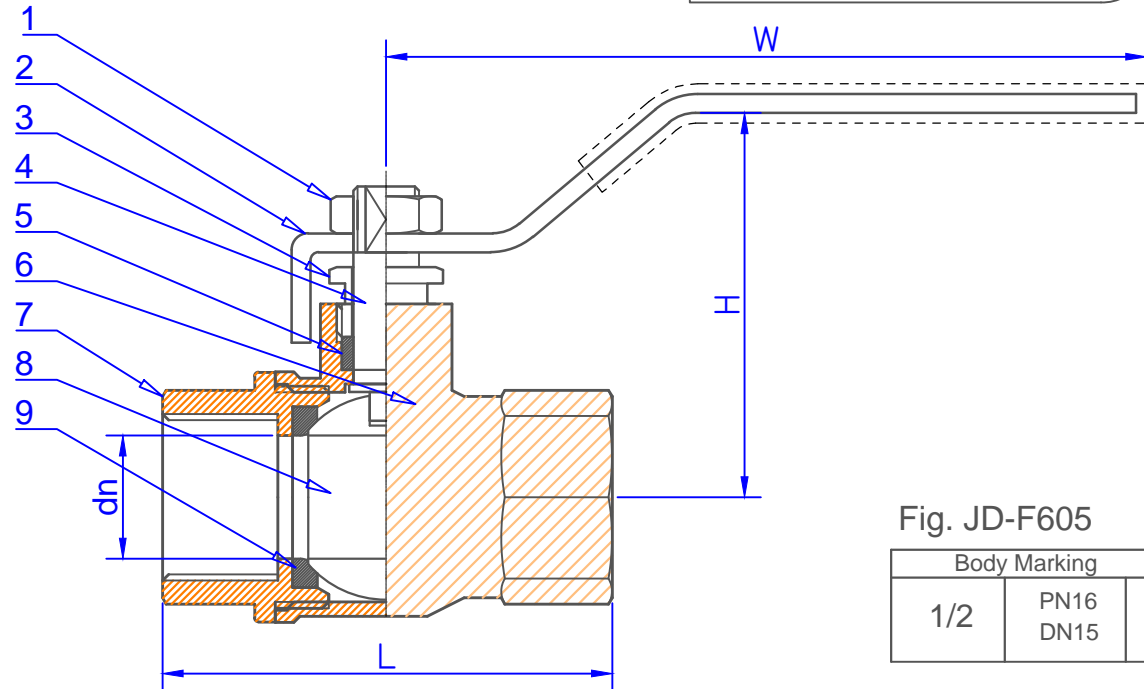


Fig. JD-F605

Body Marking		
1/2	PN16	DN15

9	Seat	PTFE
8	Ball	Steel
7	Cap	Brass
6	Body	Brass
5	Packing	PTFE
4	Stem	Brass
3	Packing gland	Brass
2	Lever handle	Steel
1	Nut	Steel
No.	Part Name	Material

Dimensions

(mm)

Size	1/4"	3/8"	1/2"	3/4"	1"	1-1/4"	1-1/2"	2"	2-1/2"	3"	4"
H			45	48							
L			48	57							
W			89	89							
dn			12.5	19							